

GARMIN® *marketing memo*

Garmin USA 1200 East 151st Street Olathe, Kansas 66062 PH: 913/397.8200 Fax: 913/397.8282

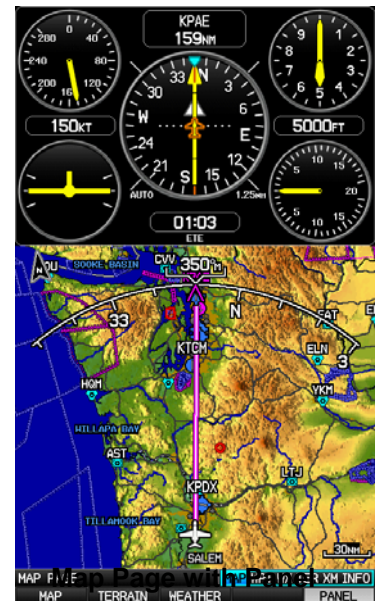
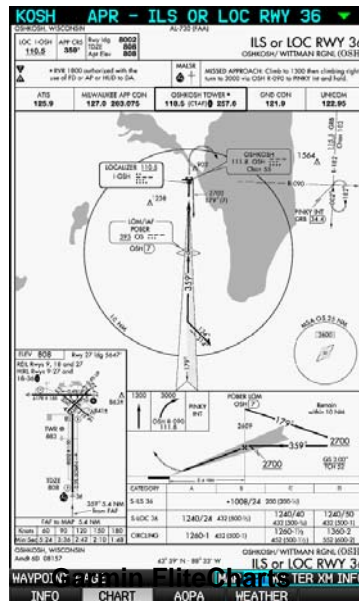
BIG News – GPSMAP® 696 and 695

Bigger is better with Garmin's newest portable, the GPSMAP® 696. It has a bright, sunlight readable 7-inch diagonal display that is as crisp and color rich as any available in aviation portables. This new larger format enables a full range of features not possible on smaller units, including: split screen panel page with a large map, a high resolution terrain page showing hazards relative to your altitude and a vertical profile of terrain along your route of flight, plus so much more. The GPSMAP 696 also becomes Garmin's first portable with Victor airways and Jet routes. New weather features are also added into the GPSMAP 696, including Icing Forecast and Pilot Reports (XM WX Satellite Weather "Aviator Pro" subscription required for these new weather products). The XM WX Aviator package continues to deliver NEXRAD images with Cell Movement and Echo Tops, in addition to Winds Aloft, TFRs, graphic and textual METARs, Terminal Forecasts and more.

The GPSMAP 696 also takes our intuitive, easy-to-use operations to a new level with an integrated rotary knob/joystick or "click stick." This G1000-like addition eliminates rocker pad data entry by providing an efficient-to-use rotary knob which selects alpha-numeric and advances the cursor with a quick tap of the joystick. The same joystick makes map panning and waypoint identification on the map page fast and intuitive.

Another key feature in the GPSMAP 696 is Garmin FliteCharts®, which adds Class I / Class II Electronic Flight Bag capability, thereby reducing the use of paper in the cockpit. FliteCharts are derived from NACO Terminal Procedures, covering the entire US, and are preloaded electronically in the unit. FliteCharts will disable when the data is over 6 months out-of-date. Purchasing a subscription is required for continuous chart availability. The new fly.garmin.com website will allow owners to subscribe to FliteCharts and also update each database necessary to keep their GPSMAP 696 up-to-date in three simple steps.

The new top-of-the-line GPSMAP 696 retains the popular aviation features of our industry-leading GPSMAP 496, including: Smart Airspace, AOPA Airport Directory data (US only), Towers & Obstructions (US and Europe), SafeTaxi (US only) and fast 5 Hz GPS updates. Place your orders today for early November deliveries.



Also coming available is the GPSMAP 695 which includes all the 696 features excluding XM WX capabilities. The GPSMAP 695 is available in three database choices: Atlantic, Pacific and Americas.

GPSMAP 696 / 695 Product Features and Specifications

- Large 7-inch diagonal WVGA sunlight readable display
- XM weather and audio capability (GPSMAP 696 only)
- Battery: Rechargeable Nickel-Metal Hydride (replaceable)
- Battery Life: Up to 2.5 hours battery life with full backlight and GXM 40 connected (8 hours with BL @ 50% and XM connected)
- 5 Hz High-sensitivity GPS receiver
- Flight Plans: 50 with up to 300 points each
- User waypoints: 3000
- Track log: 10,000 points
- Flight log: At least 50 most recent flights
- SD card slot for additional Garmin mapping data
- Size: 144W x 196H x 51D mm (5.7W x 7.7H x 2.0D inches)
- Weight: 1012 g (2.2 lb) with battery pack, 635 g (1.4 lb) without battery pack; 361 g (0.80 lb) RAM mount

SKU Information

<p><u>GPSMAP 696, Americas (includes XM capability)</u> Package contains : GPSMAP 696, yoke mount, GXM 40 XM antenna, 12/24 volt power cable, AC adapter, USB cable, GA 25 remote antenna with suction cup mount, protective cover, owner's manual, quick start guide</p> <p>Available: November, 2008 P/N: 010-00667-40 UPC: 753759080129</p> <p>List: \$3595.00 MRP: \$3295.00</p>	<p><u>GPSMAP 695, Americas (no XM capability)</u> Package contains : GPSMAP 695, yoke mount, 12/24 volt power cable, AC adapter, USB cable, GA 25 remote antenna with suction cup mount, protective cover, owner's manual, quick start guide</p> <p>Available: November, 2008 P/N: 010-00667-50 UPC: 753759080136</p> <p>List: \$2895.00 MRP: \$2695.00</p>
<p><u>GPSMAP 695, Atlantic (no XM capability)</u> Package contains : GPSMAP 695, yoke mount, 12/24 volt power cable, AC adapter, USB cable, GA 25 remote antenna with suction cup mount, protective cover, owner's manual, quick start guide</p> <p>Available: December, 2008 P/N: 010-00667-60 UPC: 753759080143</p> <p>List: \$2895.00 MRP: \$2695.00</p>	<p><u>GPSMAP 695, Pacific (no XM capability)</u> Package contains : GPSMAP 695, yoke mount, 12/24 volt power cable, AC adapter, USB cable, GA 25 remote antenna with suction cup mount, protective cover, owner's manual, quick start guide</p> <p>Available: November, 2008 P/N: 010-00667-70 UPC: 753759083410</p> <p>List: \$2895.00 MRP: \$2695.00</p>

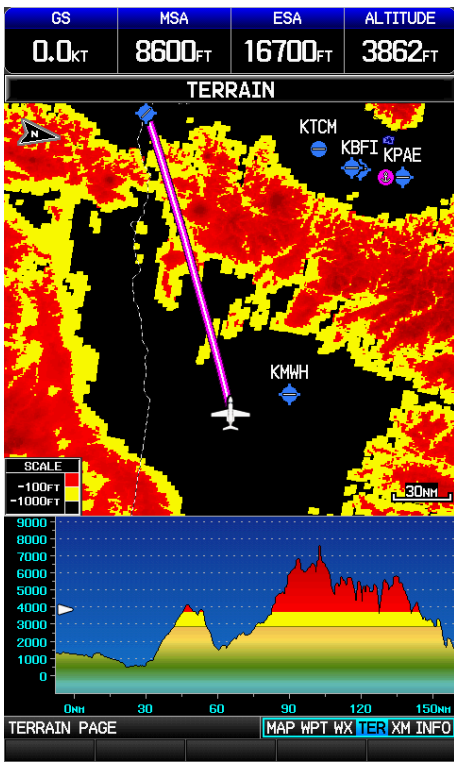
Description	Part Number	UPC Number	List Price
Carrying case	010-11206-01	7-5375908549-0	\$49.95
Lap mount	010-11206-00	7-5375908574-2	\$49.95
Battery pack	010-11206-10	7-5375908575-9	\$199.95
AC adapter for U.S	010-11206-11	7-5375908576-6	\$49.95
AC adapter for International plugs	010-11206-12	7-5375908577-3	\$49.95
12/24 volt charging cable	010-11206-13	7-5375908578-0	\$29.95
Protective cover	010-11206-14	7-5375908579-7	\$19.95
Power/data cable (pigtail)	010-11206-15	7-5375908580-3	\$27.95
Yoke mount	010-11206-16	7-5375908581-0	\$74.95
GXM 40 Antenna	010-00730-00	7-5375908097-6	\$267.84
Flange mount for GXM 40	010-11109-00	7-5375908112-6	\$4.00
Magnetic mount for GXM 40	010-11144-00	7-5375908113-3	\$18.00

Packaging Information

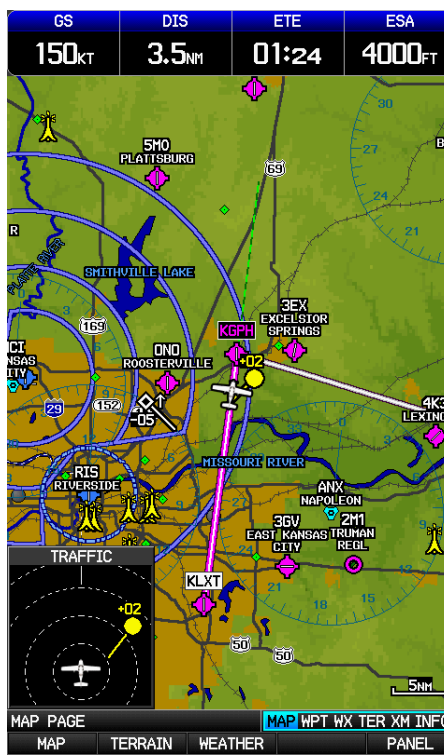
<u>Gift Box Dimensions</u> 19"H x 21"W x 38"D	<u>Gift Box Weight</u> 8 lbs
---	--

See Page 3 for more sample screens.

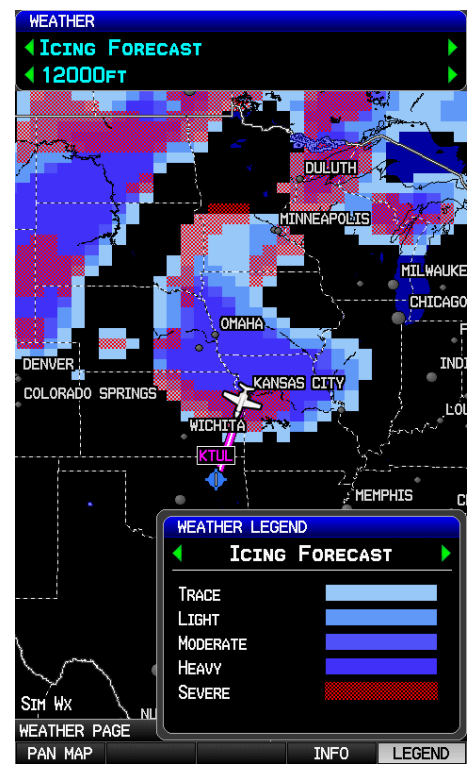
Relative Terrain with Profile



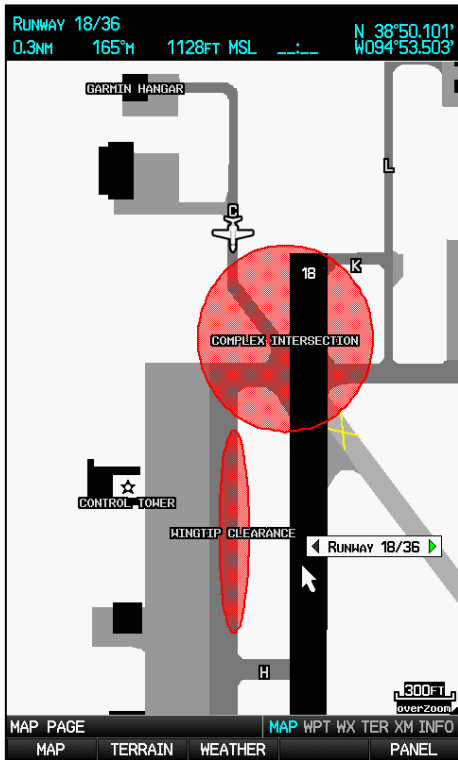
Traffic Interface (GTX 330)



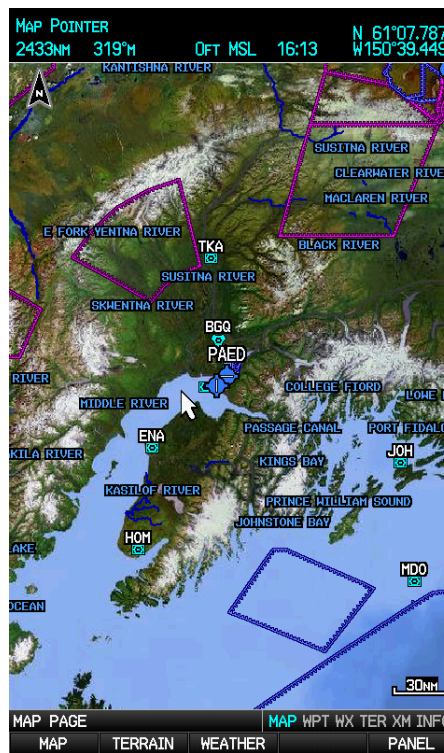
XM WX Icing Forecast



SafeTaxi (with "Hot Spots")



Satellite View



IFR Map with Airways

